

For Lease

Prime opportunity for retail



Place Nobel
1200 Place Noble





Overview

- Located in the beautiful town of Boucherville, where many upscale houses, parks and green spaces decorate its beautiful neighborhoods.
- This site offers great visibility as it is just off highway 20, in a high traffic district
- Surrounded by: the industrial area around place Nobel is home to 600 companies and 15 000 jobs in various sectors
- Close to National Park of Boucherville islands

Project highlights

- Ample amount of parking spaces available
- Place Nobel well serves the residents in this growing community
- Easily accessible
- Retail around:
 - Same strip: Greenhawk and Énergie Cardio, Action sport Physio & Idolem Yoga
 - Many well-known restaurant brands attracting high traffic volumes
 - Redeveloping area- many new popular brands seeking this specific area
 - Réno-Dépôt
 - Bowling alley
 - o Cinema
 - o IKEA
- Daily traffic counts (source: piinpoint) : 27,238 vehicles/day



Property details

- UNIT 1 | 3,942 SF
- UNIT 2 | 7,663 SF
- AVAILABLE | Immediately
- NET RENT | According to the Market
- ADDITIONAL RENT | \$XX.XX PSF (2020)

Demographics

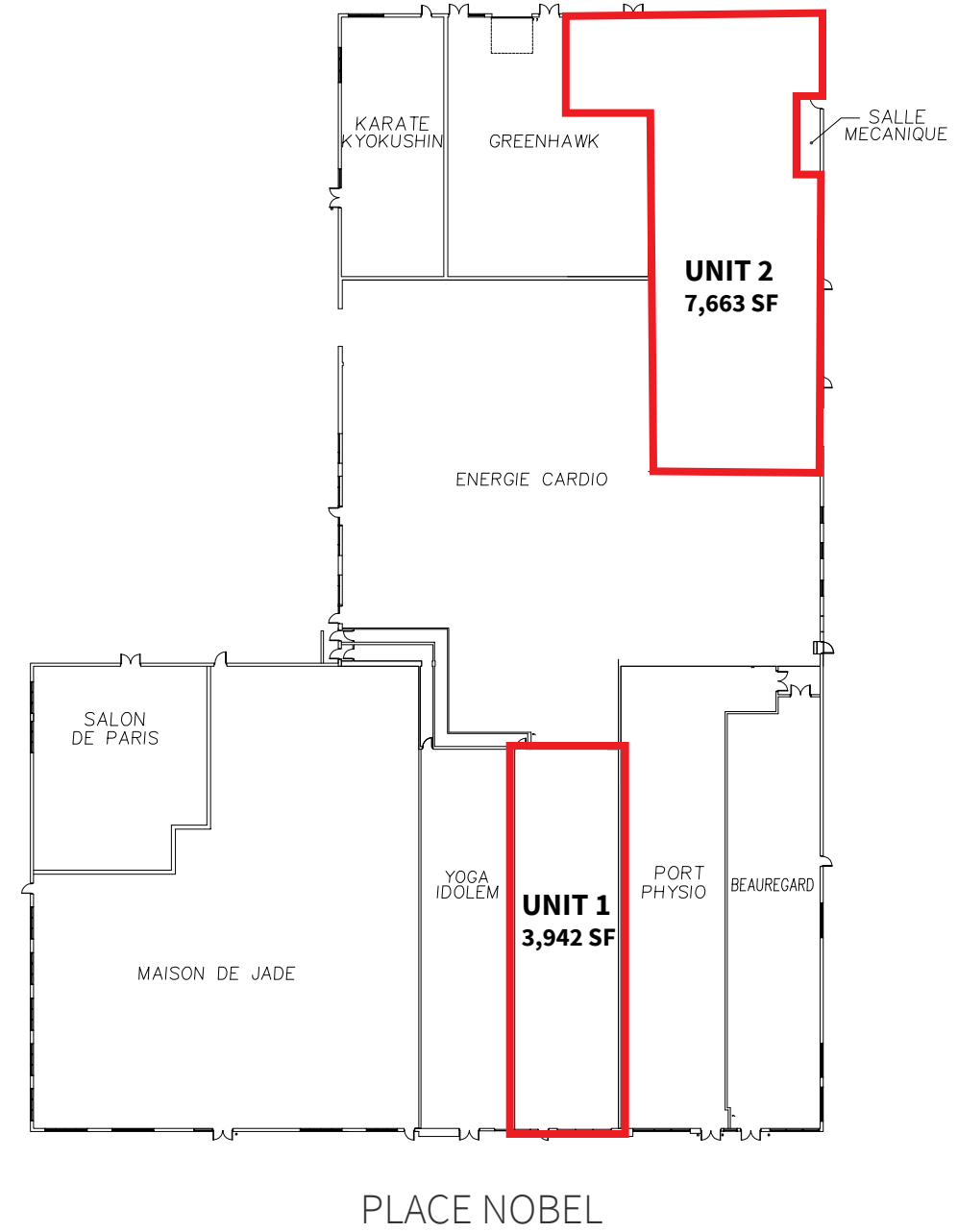
	1km	3km	5km
<div></div> <div>Population</div>	1,624	12,134	89,624
<div></div> <div>Daytime Population</div>	1,651	17,305	112,292
<div></div> <div>Avg. Household Income</div>	\$178,967	\$176,257	\$118,473
<div></div> <div>Median Age</div>	46	46	45

Source: Statistics Canada, 2020



Floor plan

UNIT 1 | 3,942 SF
UNIT 2 | 7,663 SF



FOR LEASE | 1200 PLACE NOBEL

Manon Larose*

Senior Vice President

+1 438 990 8968

Manon.Larose@am.jll.com



Although information has been obtained from sources deemed reliable, Owner, Jones Lang LaSalle, and/or their representatives, brokers or agents make no guarantees as to the accuracy of the information contained herein, and offer the Property without express or implied warranties of any kind. The Property may be withdrawn without notice. If the recipient of this information has signed a confidentiality agreement regarding this matter, this information is subject to the terms of that agreement. ©2020. Jones Lang LaSalle. All rights reserved.

*Certified Real Estate Broker DA